



IB MYP HONORS ENGLISH 9

Instructor: Ms. Holli Hoffman
Team Isles

Email: holli.hoffman@mpls.k12.mn.us

Website:

Room Number: 309



Course Description

Welcome to MYP Honors English 9! This course fulfills the Language and Literature requirement for students in Year 4 of the IB Middle Years Programme (MYP). This year long course will provide opportunities for students to become **inquirers** who *investigate*, *act* and *reflect* (both collaboratively and independently) on a variety of texts and genres. We will be increasing your awareness of the power of language. We will be engaging with texts from different times, places, cultures, geographical regions, historical periods and perspectives. This course will weave concepts in language and literature with those of math, science and geography to create an interdisciplinary and meaningful learning experience that is thought-provoking and relevant to your lives.

Aims and Objectives

The aims of this course are to encourage and enable students to:

- use language as a vehicle for thought, creativity, reflection, learning, self-expression, analysis and social interaction
- develop the skills involved in listening, speaking, reading, writing, viewing and presenting in a variety of contexts
- develop critical, creative and personal approaches to studying and analyzing literary and non-literary texts
- engage with text from different historical periods and a variety of cultures
- explore and analyze aspects of personal, host and other cultures through literary and non-literary texts explore language through a variety of media and modes
- apply linguistic and literary concepts and skills in a variety of authentic contexts
- develop a lifelong interest in reading.

In order to reach the aims of this course, students will be able to:

Analyze

1. Analyze the content, context, language, structure, technique and style of text(s) and the relationship among texts
2. Analyze the effects of the creator's choices on an audience
3. Justify opinions and ideas, using examples, explanations and terminology
4. Evaluate similarities and differences by connecting features across and within genres and texts

Organize

1. Employ organizational structures that serve the context and intention
2. Organize opinions and ideas in a sustained, coherent and logical manner
3. Use referencing and formatting tools to create a presentation style suitable to the context and intention

Produce Text

1. Produce texts that demonstrate insight, imagination and sensitivity while exploring and reflecting critically on new perspectives and ideas arising from personal engagement with the creative process
2. Make stylistic choices in terms of linguistic, literary and visual devices, demonstrating awareness of impact on an audience
3. Select relevant details and examples to develop ideas

Use Language

1. Use appropriate and varied vocabulary, sentence structures and forms of expression
2. Write and speak in a register and style that serve the context and intention
3. Use correct grammar, syntax and punctuation
4. Spell and pronounce with accuracy
5. Use appropriate non-verbal communication techniques

Course Readings

1st Quarter Literature: short stories, novel, Media Literacy
Writing: literary analysis, short story, sentence structure

2nd Quarter Literature: novel, non-fiction, poetry
Writing: literary analysis, poetry

3rd Quarter Literature: drama
Writing: literary analysis, essay

4th Quarter Literature: world mythology, epic and lyric poetry
Writing: original myth, comparison and contrast

Expectations of Student Work

Daily Participation: Class attendance is required, and students are encouraged to contribute to class discussion. Participation is the key to a lively class.

Tests & Quizzes: Students will take written and oral formative assessments (quizzes and short assignments) throughout the year, both announced and unannounced. Summative assessments will be administered after each unit of study and address the MYP Language and Literature assessment criteria.

Late Work: If you turn in an assignment late, you will put it in the LATE WORK BIN at the front of the classroom. Please be respectful of my time as I grade late work. If you expect to get an A or a B in this class, I expect that all of your work is turned in on time OR you have arranged an extension with me.

Retake Policy: There are no official retakes in this class. If you are not pleased with a score, you have the opportunity to redo the assessment and get a new score. You (the student) are responsible for coming up with a different way to prove that you understand the concept. The original rubric will be used to score your new assessment. Papers, presentations, etc. are all appropriate retake assessments.

Classroom Atmosphere

English 9 courses encourage the practice of self-discipline and positive work and study habits.

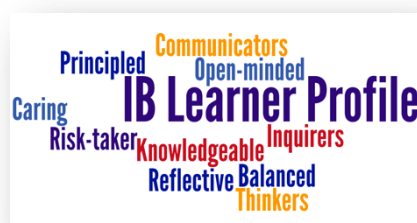
Respect for all people, property, and ideas in class is paramount, so that learning can take place in an atmosphere of tolerance. Good behavior and positive attitudes make learning easier and more fun. We all want to enjoy the results of our hard work.

Classroom Expectations:

- Ask questions
- Be attentive in class
- Come to class prepared: notebook, writing utensil, copy of the book we are reading (all texts are available to check out through the Media Center or you can purchase your own copy of each book), folder/binder, independent reading book
- Complete assignments on time
- Contribute to class discussions – participation is essential for a lively class!
- Attend class regularly and on time

IB Learner Profile

As an IB World School, all students and staff at Southwest strive to become people who are internationally minded, recognizing that we have a common humanity and a shared guardianship of the planet, we seek to help create a better and more peaceful world. The 10 traits of the IB Learner Profile help us create a community of learners and ensure this aim becomes a reality.



Approaches to Learning (ATL)

Approaches to learning (ATL) skills will give you a chance to develop and demonstrate your *thinking, social, communication, self-management* and *research skills* to ensure that you are aware of your strengths and practice continued reflection.

Policies and Procedures

Hall Passes: Schoolwide policy states students may not leave class in the first or last TEN minutes. If you need to leave the room, you must have a hall pass signed by Ms. Hoffman. As your teacher, I reserve the right to refuse you a pass. At the end of the class period, Ms. Hoffman – not the bell – dismisses you from the room.

Food: Food and drink (without lids) are not permitted in this classroom for sanitary reason.

Technology/Electronics: Be deliberate with technology - it is important to learn how to use these tools in a deliberate and respectful way. **Classroom Technology Policy:** Phones can only be used for classwork and with the teacher's permission. *After one warning to put your phone away, I will take it for the rest of the class period.*

Academic Honesty Policy

We will follow the Southwest Academic Honesty policy with issues of academic malpractice. We will discuss the policy in class and ensure that students understand what is considered proper conduct in relation to producing work and taking exams. We want to promote learning through inquiry and take pride in celebrating authentic work. The Southwest Academic Policy can be found here:

http://southwest.mpls.k12.mn.us/uploads/swhs_academic_honesty_policy_sept2017.pdf

Grading

Your grade will be based on the IB Criteria for MYP Language and Literature Year 5. These criteria will measure the quality of your work. The four criteria of MYP Language and Literature are as follows:

Criterion A: Analysis

How well does the student:

- i. Analyze the content, context, language, structure, technique and style of text(s) and the relationship among texts
- ii. Analyze the effects of the creator's choices on an audience
- iii. Justify opinions and ideas, using examples, explanations and terminology
- iv. Evaluate similarities and differences by connecting features across and within genres and texts

Criterion B: Organization

How well does the student:

- i. Employ organizational structures that serve the context and intention
- ii. Organize opinions and ideas in a sustained, coherent and logical manner
- iii. Use referencing and formatting tools to create a presentation style suitable to the context and intention

Criterion C: Producing Text

How well does the student:

- i. Produce texts that demonstrate insight, imagination and sensitivity while exploring and reflecting critically on new perspectives and ideas arising from personal engagement with the creative process
- ii. Make stylistic choices in terms of linguistic, literary and visual devices, demonstrating awareness of impact on an audience
- iii. Select relevant details and examples to develop ideas

Criterion D: Using Language

How well does the student:

- i. Use appropriate and varied vocabulary, sentence structures and forms of expression
- ii. Write and speak in a register and style that serve the context and intention
- iii. Use correct grammar, syntax and punctuation
- iv. Spell and pronounce with accuracy
- v. Use appropriate non-verbal communication techniques

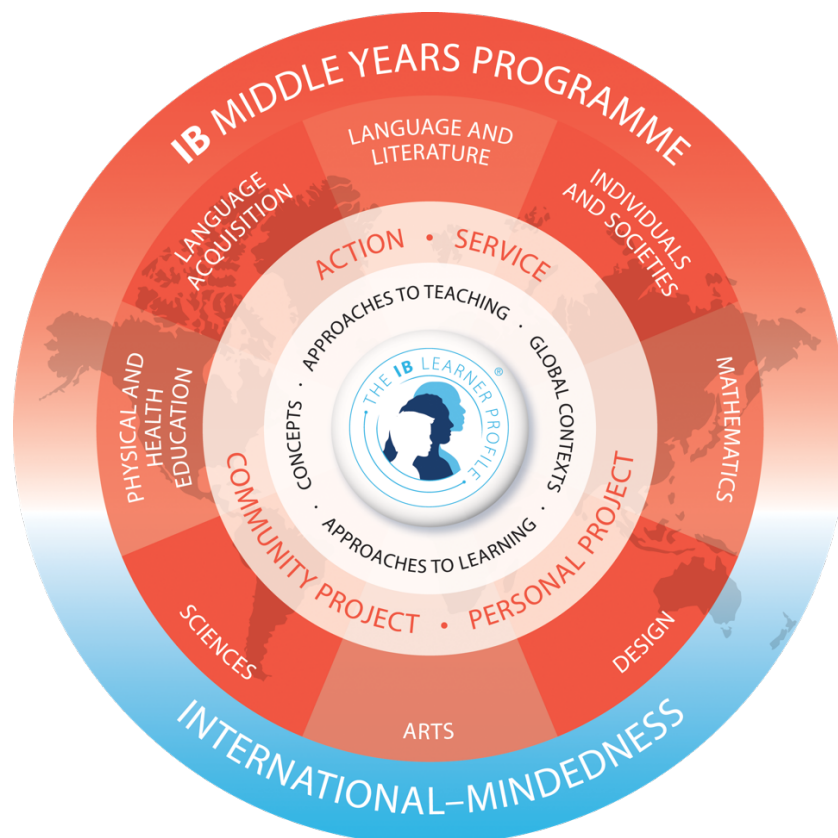
All students are expected to adhere to the Southwest High School and Minneapolis District Citywide Discipline Policy, designed to promote a safe and respectful learning environment. For more information about your rights and responsibilities consult your Southwest Student/Parent Handbook.

The grade book will show the four Criterion A-D and their subcategories. Each grade that is entered into the gradebook will be worth 8 points. The computer will average all the grades together and give you a percentage. While your grade will not be lowered, it may be raised if you show growth over the quarter and complete your formative (practice) assignments. Missed assessments will lower the opportunity to show growth and should be made up! Failure to have a minimum of 75% of the assessments will result in an incomplete for the class. Less than 75% will result in an Incomplete. An Incomplete may change to a failing grade if not made up within two weeks of the end of the grading period.

Grade scale conversion for MYP Rubric

- 8 = A
- 7 = A-
- 6 = B
- 5 = B-
- 4 = C
- 3 = C-
- 2 = D
- 1 = D-
- 0 = F

Students will have multiple opportunities to demonstrate their knowledge on each criterion in class. The students' *growth* will be reflected in their final grade.





Southwest High School
IB World School
'Every Student, Every Day'

Please sign and return this page to Ms. Hoffman.

Student's Name: (Print) _____

Course Name: *IB MYP Honors English– 2018-2019*

Please sign below verifying that you have reviewed the course syllabus and the attached academic dishonesty policy with your student and understand the description, goals, requirements and expectations for this course. Your student will be accountable for these guidelines. I can be reached via email at hhoffman@mpls.k12.mn.us or voice mail by calling 612.668.3030. Email is the easiest way to contact me regarding questions or comments. Thank you.

Parent Signature: _____

Student Signature: _____

